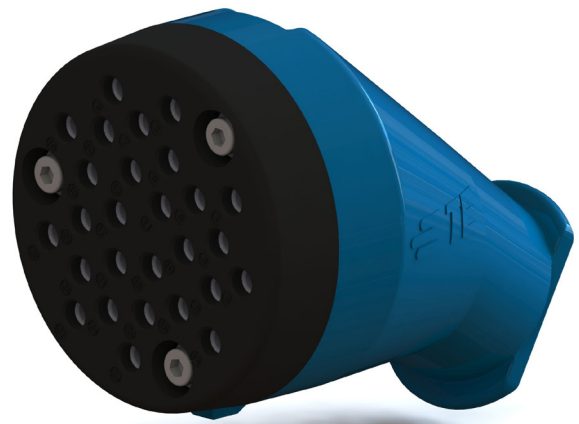


INTRODUCING MU27P SERIES

- **Longer product durability with high salt spray resistance to increase product life cycle**
- **Vivid colors enable clear distinction between different versions to prevent mismatching.**



The Multiple Unit (MU) connectors include a 27 pin receptacle, plug and “dummy” receptacle that are used to convey the locomotive functions between units. 27 point trainline connectors allow a single point in the train to issue up to 27 commands to all or some of the vehicles simultaneously. TE’s MU27P connectors are used to convey control & indication signals such as door controls and indications, public address, brake applied/released indications as well as audio and other passenger rail functions.

Designed to accept three 10 AWG lead with all other leads being 12 AWG or 14 AWG allows the connectors to be completely interchangeable and intermateable with other brands adhering to the AAR-S-512 specification, and are key in preventing intermating of different wiring configurations.

KEY BENEFITS

- Better retention of the plug in the receptacle with shark fin to prevent unwanted disconnection
- No mis-connections due to mechanical coding to avoid wrong combination of plug and receptacle

APPLICATIONS

- Intervehicle
- Locomotives

MATERIALS

- Shell Aluminum
- Crimp Contacts Silver Plated

PRODUCT COMPLIANCE / APPROVALS

- AAR S-512
- APTA-PR-E-RP-017-99
- APTA-PR-E-RP-019-99

ELECTRICAL

- Rated Current 30A
- Service Voltage 600 V DC

MECHANICAL

- 27 pole arrangement
- 10, 12 or 14 AWG wires
- Mechanical coding
- Intermateable with other major brands

STANDARDS & SPECIFICATIONS

- Tested against NF F 61-030 selected criteria

ENVIRONMENTAL SPECIFICATIONS

- Salt Spray: 250 hours
- Temperature Range: -40 °C - 110 °C (-40 °F - 230 °F)