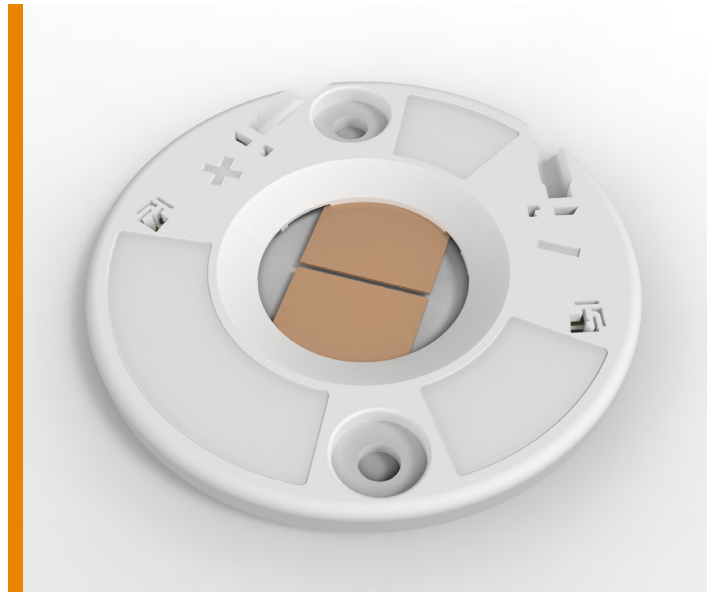


INTRODUCING LUMAWISE Z45 LED HOLDERS

- **Quick and easy assembly of the COB LEDs in the luminaire**
- **Optics close to light emitting area**



TE Connectivity (TE) introduces the new LUMAWISE Z45 LED Holder to our broad offering of LED holders for chip-on-board (COB) LEDs. The Z45 LED holder is TE's next generation LED holder using a high strength, highly reflective and halogen free housing material. It carries over from previous TE holders adhesive tape and poke-in wire connections for fast and easy solderless connection to COB LEDs into the luminaire. TE's LUMAWISE Z45 LED Holders enable compliance to the Zhaga book 3 standard and are compatible with other Zhaga LED lighting components.

KEY BENEFITS

- Quick and easy assembly of the COB LEDs in the luminaire
- Optics close to light emitting area
- Minimal light loss with 120° optic angle
- Simplified interchangeability between LEDs (conform to Zhaga standards)

APPLICATIONS

- Spot Lighting
- Down Lighting
- Track Lighting
- Street Lighting
- Horticultural Lighting
- General Lighting

LEARN MORE

[LUMAWISE Z45 LED Holder Model Page](#)
[LUMAWISE Z45 LED Holder Product Flyer](#)
[LUMAWISE Z45 LED Holder Parts List](#)

ELECTRICAL

- Current: 3A (Maximum)
- Voltage: 60V DC (Maximum)

MECHANICAL

- Operating temperature range from -40°C to 105°C
- Utilize screw size of #4 or M3 for attachment
- Poke-in style electrical contacts supporting 18-22 AWG (0.35 - 0.75mm²) solid, fused and stranded wire
- Enables compliancy to Zhaga book 3 standard

MATERIALS

- Halogen free high reflective PBT
- Copper alloy contact gold plate

STANDARDS & SPECIFICATIONS

- Standards: UL8574
IEC 60838-2-2
- Application Specification: 114-133107