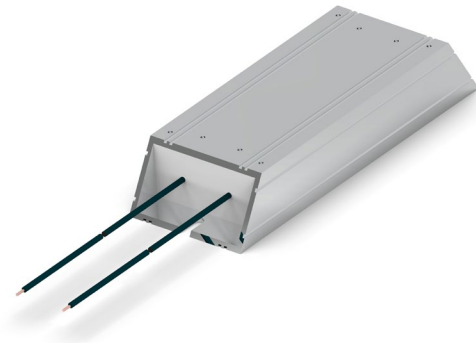


INTRODUCING

ALUMINUM HOUSED BRAKING RESISTORS HCH SERIES

- High power overload capability
- IP54 ingress protection



TE Connectivity (TE) Aluminum Housed Braking Resistors HCH Series are wire wound power resistors, designed and tested to absorb high power overloads. They are suited for energy braking, power supply, robotics and automation control applications.

Aluminum Housed Braking Resistors HCH Series were tested by applying the specified overload power for 1 or 5 or 40 seconds within a 120 second cycle comprising of both on and off periods. These are equivalent to duty cycles of 0.83%, 4.16% and 33.3% which are typical braking cycles used in drive systems.

KEY BENEFITS

- High power overload capability
- IP54 ingress protection
- PTFE insulated flying leads for connection flexibility
- Four variants (200W to 500W at 40° C)
- Available in 5% and 10% tolerances

APPLICATIONS

- Energy braking
- Power supplies
- Frequency convertors
- Robotics
- Automation controls

LEARN MORE

[Aluminum housed braking resistors data sheet](#)

[Wirewound power chassis mount resistors](#)

[Chassis mount resistor FAQs](#)

[Choosing power resistors: insights into the technology](#)

[Aluminum Housed Braking Resistors HCH Series Parts List](#)